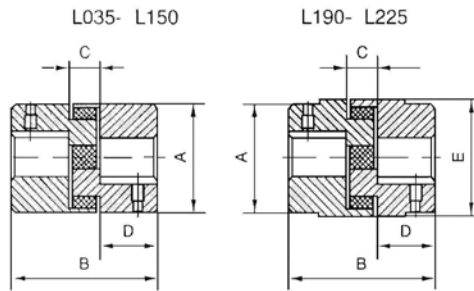




PRICE LIST 9004R
Effective: February 1, 2009

3465 Lost Nation Unit #15, Willoughby, OH 44094
Phone (440) 946-9367 (800) 989-0162 Fax (440) 946-6148
E-mail: jaydeebelts@sbcglobal.net Website: www.jdv-belts.com

JAYDEE JAW COUPLINGS



- * OIL AND HEAT RESISTANT
- * MAINTENANCE FREE
- * BUNA SPIDER INSERT EASILY REPLACEABLE
- * STANDARD COUPLINGS ARE FINISH BORED

PART NUMBER	DIMENSIONS					WEIGHT LBS	TORQUE IN LBS	MAXIMUM RPM	BORE		HALF COUPLING LIST PRICE
	A	B	C	D	E				MIN	MAX	
L035	5/8	13/16	9/32	17/64	-	0.07	3.52	31000	1/8	3/8	\$5.00
L050	1 5/64	1 23/32	15/32	5/8	-	0.13	25.8	18000	1/4	5/8	\$5.00
L070	1 23/64	2	1/2	3/4	-	0.03	44.1	14000	1/4	3/4	\$7.65
L075	1 3/4	2 1/8	1/2	13/16	-	0.44	88.2	11000	1/4	7/8	\$9.30
L090	2 7/64	2 1/8	1/2	13/16	-	0.69	145	9000	1/4	1	\$14.30
L095	2 7/64	2 1/2	1/2	1	-	0.09	189	9000	7/16	1 1/8	\$21.80
L099	2 17/32	2 7/8	3/4	1 1/16	-	1.19	315	7000	7/16	1 3/16	\$27.50
L100	2 17/32	3 1/2	3/4	1 3/8	-	1.47	415	7000	7/16	1 3/8	\$40.80
L110	3 5/16	4 1/4	7/8	1 11/16	-	3.20	788	5000	5/8	1 5/8	\$55.90
L150	2 3/4	4 1/2	1	1 3/4	-	4.50	1260	5000	5/8	1 7/8	\$71.60
L190	4	5 1/4	1	2 1/8	4 1/2	8.25	1702	4000	3/4	2 1/8	\$131.00
L225	4 1/4	6	1	2 1/2	5	12.00	2332	4000	3/4	2 5/8	\$154.00

KEYWAY DIMENSIONS CONFORM TO, USAS B 17.1 - 1967, STANDARDS
PRICES INCLUDE KEYWAY & SET SCREW WITH FINISHING BORE

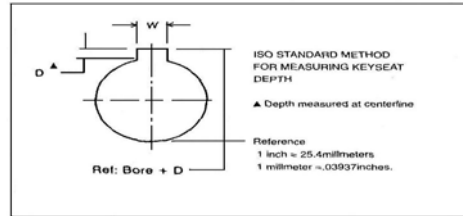
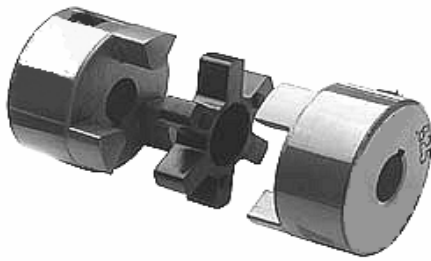
JAW COUPLING INSERTS SOLD SEPARATELY	
HUB P/N	LIST PRICE
L035N	\$2.40
L050N	\$3.40
L070N	\$4.90
L075N	\$8.20
L090/095N	\$10.60
L099/100N	\$22.20
L110N	\$25.60
L150N	\$44.40
L190N	\$63.90
L225N	\$86.30
Standard Buna - Black	

JAW COUPLING INSERTS SOLD SEPARATELY	
HUB P/N	LIST PRICE
L035H	\$8.00
L050H	\$11.90
L070H	\$16.30
L075H	\$24.60
L090/095H	\$32.60
L099/100H	\$77.70
L110H	\$93.90
L150H	\$112.80
L190H	\$133.00
L225H	\$157.00
Hytrel - White	

TAPER BUSHING HUBS SOLD INDIVIDUALLY		
HUB P/N	BUSHING REQUIRED	LIST PRICE
L099-TB	1108	\$32.60
L100-TB	1108	\$48.00
L110-TB	1210	\$65.50
L150-TB	1210	\$83.60
L190-TB	1610	\$148.00
L225-TB	2012	\$181.00

N= Standard Buna-NBR Insert
H= Hytrel Insert

JAYDEE JAW COUPLINGS



Hub	Bore- Inch	Set Screw Size	Key Way - Inch
L035	1/8, 3/16, 1/4, 5/16, 3/8.....	6-32	NONE
L050	1/4, 5/16, 3/8, 7/16.....	1/4-20	NONE
	1/2, 9/16.....	1/4-20	1/8 X 1/16
	5/8.....	1/4-20	3/16 X 3/32
L070	1/4, 5/16, 3/8, 7/16, 1/2.....	1/4-20	NONE
	9/16.....	1/4-20	1/8 X 1/16
	5/8, 11/16, 3/4.....	1/4-20	3/16 X 3/32
L075	1/4, 5/16, 3/8, 7/16.....	1/4-20	NONE
	1/2, 9/16.....	1/4-20	1/8 X 1/16
	5/8, 11/16, 3/4, 13/16, 7/8.....	1/4-20	3/16 X 3/32
L090	1/4, 5/16, 3/8, 7/16.....	5/16-18	NONE
	1/2, 9/16.....	5/16-18	1/8 X 1/16
	5/8, 11/16, 3/4, 13/16, 7/8.....	5/16-18	3/16 X 3/32
	15/16, 1.....	5/16-18	1/4 X 1/8
L095	7/16.....	5/16-18	NONE
	1/2, 9/16.....	5/16-18	1/8 X 1/16
	5/8, 11/16, 3/4, 13/16, 7/8.....	5/16-18	3/16 X 3/32
	15/16, 1, 1 1/16, 1 1/8.....	5/16-18	1/4 X 1/8
L099	7/16, 1/2.....	5/16-18	NONE
	1/2, 9/16.....	5/16-18	1/8 X 1/16
	5/8, 11/16, 3/4, 13/16, 7/8.....	5/16-18	3/16 X 3/32
	15/16, 1, 1 1/16, 1 1/8, 1 3/16.....	5/16-18	1/4 X 1/8
L100	7/16.....	5/16-18	NONE
	1/2, 9/16.....	5/16-18	1/8 X 1/16
	5/8, 11/16, 3/4, 13/16.....	5/16-18	3/16 X 3/32
	15/16, 1, 1 1/16, 1 1/8, 1 3/16, 1 1/4.....	5/16-18	1/4 X 1/8
	1 5/16, 1 3/8.....	5/16-18	5/16 X 5/32
	1 7/16.....	5/16-18	3/8 X 3/16
L110	5/8, 11/16, 3/4, 13/16, 7/8.....	3/8-16	3/16 X 3/32
	15/16, 1, 1 1/16, 1 1/8, 1 3/16, 1 1/4.....	3/8-16	1/4 X 1/8
	1 5/16, 1 3/8.....	3/8-16	5/16 X 5/32
	1 7/16, 1 1/2, 1 9/16, 1 5/8.....	3/8-16	3/8 X 3/16
	1 7/8.....	3/8-16	1/2 X 1/4
L150	1/2.....	3/8-16	NONE
	3/4, 13/16, 7/8.....	3/8-16	3/16 X 3/32
	15/16, 1, 1 1/16, 1 1/8, 1 3/16, 1 1/4.....	3/8-16	1/4 X 1/8
	1 5/16, 1 3/8.....	3/8-16	5/16 X 5/32
	1 7/16, 1 1/2, 1 9/16, 1 5/8, 1 11/16, 1 3/4.....	3/8-16	3/8 X 3/16
	1 7/8.....	3/8-16	1/2 X 1/4
L190	1/2.....	1/2-13	NONE
	3/4, 13/16, 7/8.....	1/2-13	3/16 X 3/32
	15/16, 1, 1 1/16, 1 1/8, 1 3/16, 1 1/4.....	1/2-13	1/4 X 1/8
	1 5/16, 1 3/8.....	1/2-13	5/16 X 5/32
	1 7/16, 1 1/2, 1 9/16, 1 5/8, 1 11/16, 1 3/4.....	1/2-13	3/8 X 3/16
	1 7/8, 1 15/16, 2, 2 1/16, 2 1/8.....	1/2-13	1/2 X 1/4
L225	3/4, 13/16, 7/8.....	1/2-13	3/16 X 3/32
	15/16, 1, 1 1/16, 1 1/8, 1 3/16.....	1/2-13	1/4 X 1/8
	1 1/4, 1 5/16, 1 3/8.....	1/2-13	5/16 X 5/32
	1 7/16, 1 1/2, 1 9/16, 1 5/8, 1 11/16, 1 3/4.....	1/2-13	3/8 X 3/16
	1 7/8, 1 15/16, 2, 2 1/16, 2 1/8, 2 3/16, 2 1/4.....	1/2-13	1/2 X 1/4
	2 3/8, 2 7/16, 2 5/8.....	1/2-13	5/8 X 15/16